



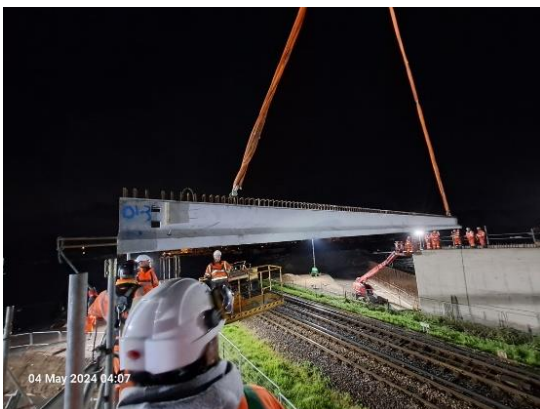
Welcome to the second edition of our Ash Road Bridge Newsletter

Exciting progress as beams go in over the railway

An important milestone for the Ash Road Bridge project was reached in May when the beams for the bridge deck were installed over the railway.

Nineteen bridge beams, each 24 metres long, were hoisted into place by a 750-tonne mobile crane. The two edge beams weigh 45 tonnes and the remaining 17 weigh 27 tonnes each. They form the bridge deck for the new road which spans the abutments on either side of the railway.

Residents were invited along to see the installation process from designated viewing platforms. Around 200 people had a front row view at four sessions over the weekend. Good weather helped progress and all 19 beams were in place by the end of Saturday 4 May. Visitors on Sunday 5 May got to see the installation of permanent glass-reinforced plastic panels. They were fitted between the new beams which will support the new concrete deck. They also saw the demobilisation of the 750-tonne mobile crane.



First beam being installed



People watching the work

We had great feedback from several of the people who came along, including:

- "It was amazing to see the magnificent crane! I am grateful to you and also to all of the workers who clearly take pride in the work that they do. It was also lovely that some of them took the time to speak to us."
- "I just wanted to thank you for the opportunity to visit your site today and see the progress on the Ash Road Bridge. Everyone we met was very helpful and willing to answer questions, even if they had probably been doing that all weekend! Special thanks go to your Project Manager."

Now that the beams are in place, the VolkerFitzpatrick team will be working on:

- the bridge deck, parapets and retaining walls
- building the embankments and connecting them to the bridge deck

[You can watch a video of the beams going in on our YouTube channel.](#)

Name that bridge!

Ash residents have a chance to go down in local history by choosing a name for their new bridge. We're confident that someone will come up with a name that chimes with the rich history, diverse environment and great community in Ash. So, for inspiration, think about local historical events or people, plants, trees or animals as well as what goes on in Ash. The winner will receive a £50 voucher. Two runners-up will get a £25 voucher and a donation of £100 will go to a local charity. [For more information, the competition rules and to enter, please visit our website.](#) You can also enter the competition using the QR code below. Please get your entries in by Friday 19 July.



The new bridge



QR code

Traffic Management Phase 3

The diversion route for Phase Three of the works will start on 15 July 2024 and run until 16 August 2024. During this time Foreman Road will be closed between Vyne Walk and Woodroffe Close. Access to Vyne Walk, along with Foreman Park and the work site, will be via the Ash Church Road junction. Access to Woodroffe Close will be via Grange Road.

Temporary traffic lights will be in place at junctions where traffic movements are limited.

For information and updates to traffic management and diversion routes, [please visit the website.](#)

Social value update

The Social Value team have been hard at work to ensure that the Ash Road Project gives something back to the community. Since our last newsletter, VolkerFitzpatrick Limited (VFL) have:

- Held two 'Open Doors' site tours with Ash Manor School on 20 March. Students were introduced to the scheme and given a tour of the site. They also had an opportunity to discuss careers in the construction and engineering industries
- Sponsored the food at a quiz night for the local scout group, ensuring that all the money raised went straight towards funds for a new scout hut



Ash Manor pupils seeing the site



Discussing career opportunities

In July, four students from Ash Manor School will be gaining work experience on site. They will spend four days getting a glimpse into how a construction project works.

Community Forum

Our second community forum was held on 22 February. We were joined by 10 subscribers who were given the latest news on the project progress. When the floor was opened to questions, the following issues were raised:

- The pedestrian diversion through Vyne Walk was questioned as residents understand that it's not a public right of way. It was recommended that residents contact their Surrey County Councillor for clarification
- Reinstatement of the damaged verges on Foreman Road. The verges are being realigned to install the new roundabout and traffic island. Participants were advised that the verges will be reinstated at the end of the project
- Foreman Park vegetation. Replanting will take place, including the area separating the Foreman Park parking area and Ash Church Road, towards the end of the project
- Speed limit for the new bridge. This was confirmed as 30 miles per hour
- Requests for a pedestrian crossing on Grange Road. Three requests for a pedestrian crossing on Grange Road, by Gainsford Drive, have been rejected by Surrey County Council. It was agreed that Alex Skinner would meet residents on Grange Road to explain the traffic calming measures

If you have any new questions you'd like to raise, please join us for our next Community Forum on Teams on Thursday 18 July. If you're not already signed up and would like to be involved, please email AshRoadBridge@VolkerFitzpatrick.com

Full marks for the scheme

The Considerate Constructors Scheme (CCS) independent assessor awarded the Ash Road Bridge project 45 out of 45 points at our second assessment in April. Despite scoring top marks, there is still an opportunity to do better and gain bonus points by implementing innovative ways of working. Watch this space for the results of our next assessment which is scheduled for late 2024.



Working hours

Our current working hours are:

- . Monday to Friday: 8am to 6pm
- . Saturdays when necessary: 8am to 1pm

Want to know more?

Visit our website for project updates. [Find out about Ash Road Bridge.](#)

You can also email us on AshRoadBridge@volkerfitzpatrick.co.uk with any queries, to sign up for email updates and join our Community Forum.